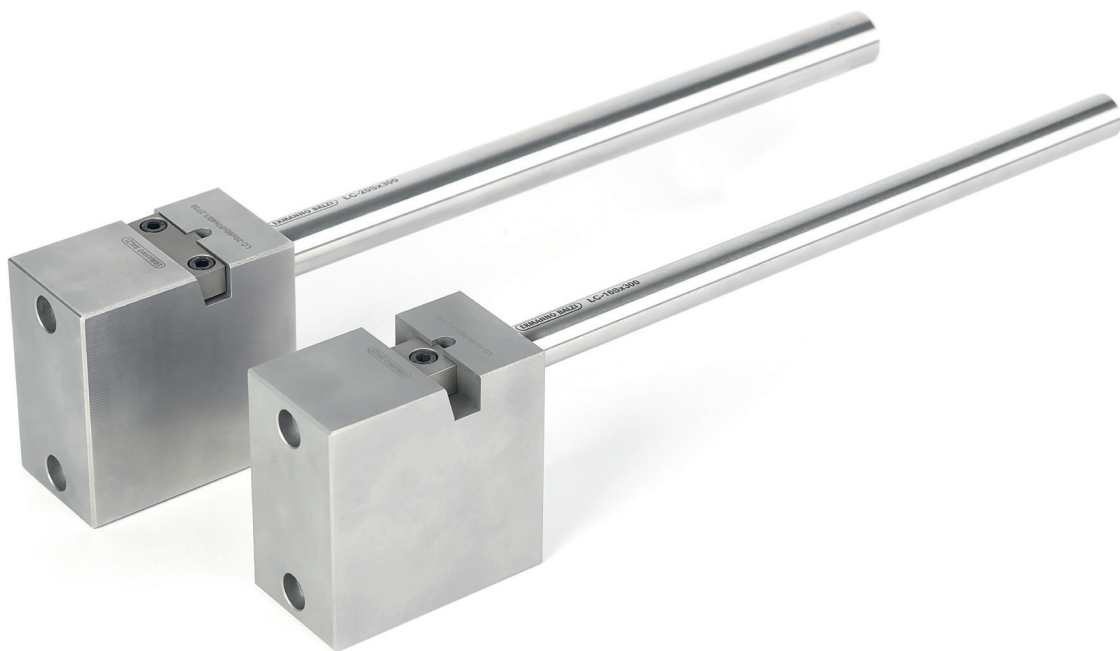
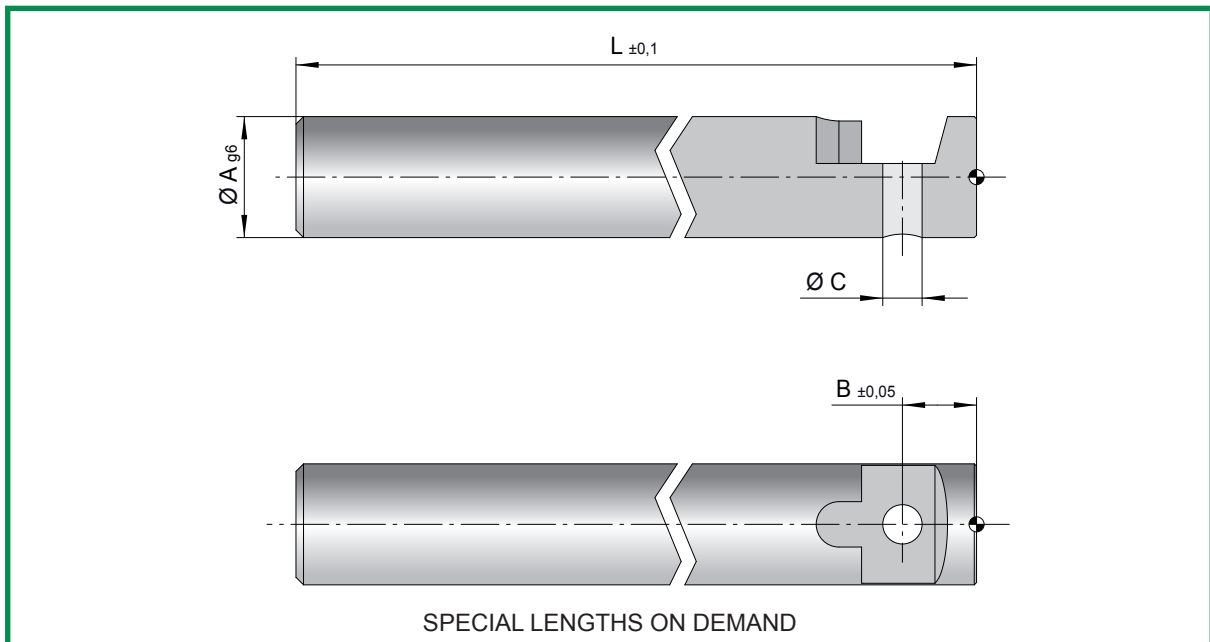


ERMANNNO BALZI



STANDARD LIFTER

ROD STANDARD LIFTER



CODE	A	B	C	L
SLS1012300	12	9,8	5,1	300
SLS1012500	12	9,8	5,1	500
SLS1016300	16	9,8	5,1	300
SLS1016500	16	9,8	5,1	500
SLS1020300	20	9,8	5,1	300
SLS1020500	20	9,8	5,1	500
SLS1025400	25	12,8	6,1	400
SLS1025600	25	12,8	6,1	600

Mat.: 1.1213

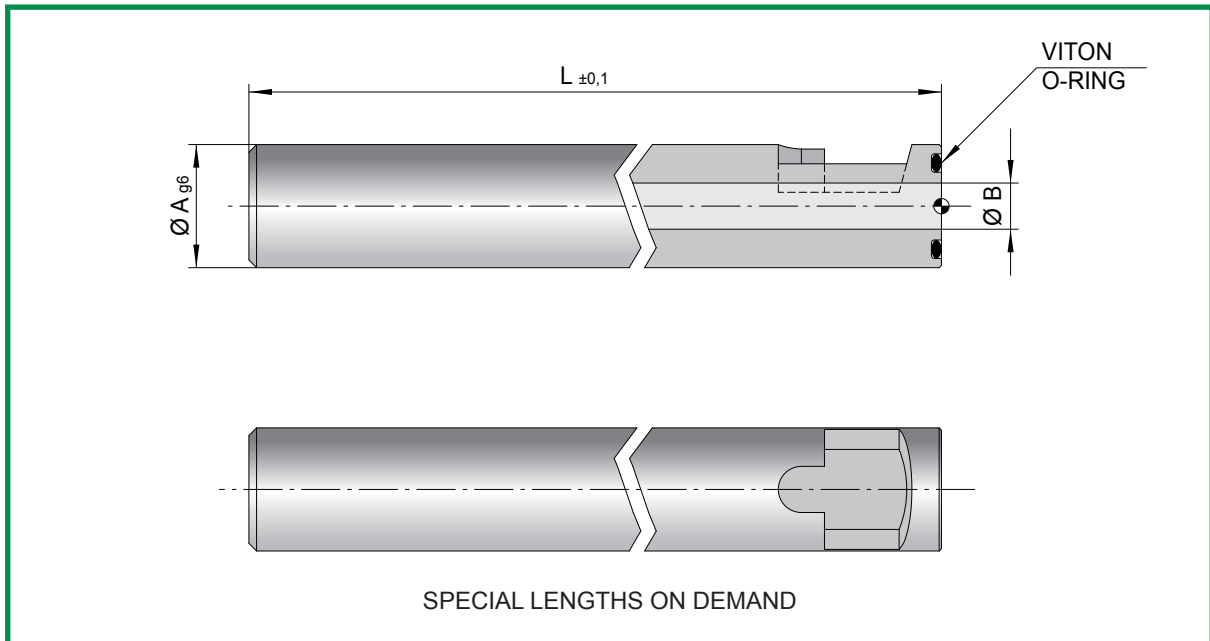
Hardness: 61-64 HRC Depth 1,5-2mm

CODE	A	B	C	L
SLS2012300	12	9,8	5,1	300
SLS2012500	12	9,8	5,1	500
SLS2016300	16	9,8	5,1	300
SLS2016500	16	9,8	5,1	500
SLS2020300	20	9,8	5,1	300
SLS2020500	20	9,8	5,1	500
SLS2025400	25	12,8	6,1	400
SLS2025600	25	12,8	6,1	600

Mat.: 1.2343

Hardness: Surface > 950 Vickers - HV 0,3

COOLED ROD STANDARD LIFTER



CODE	A	B	L
SLSR1012300	12	6	300
SLSR1012500	12	6	500
SLSR1016300	16	6	300
SLSR1016500	16	6	500
SLSR1020300	20	8	300
SLSR1020500	20	8	500
SLSR1025400	25	8	400
SLSR1025600	25	8	600

Mat.: 1.1213

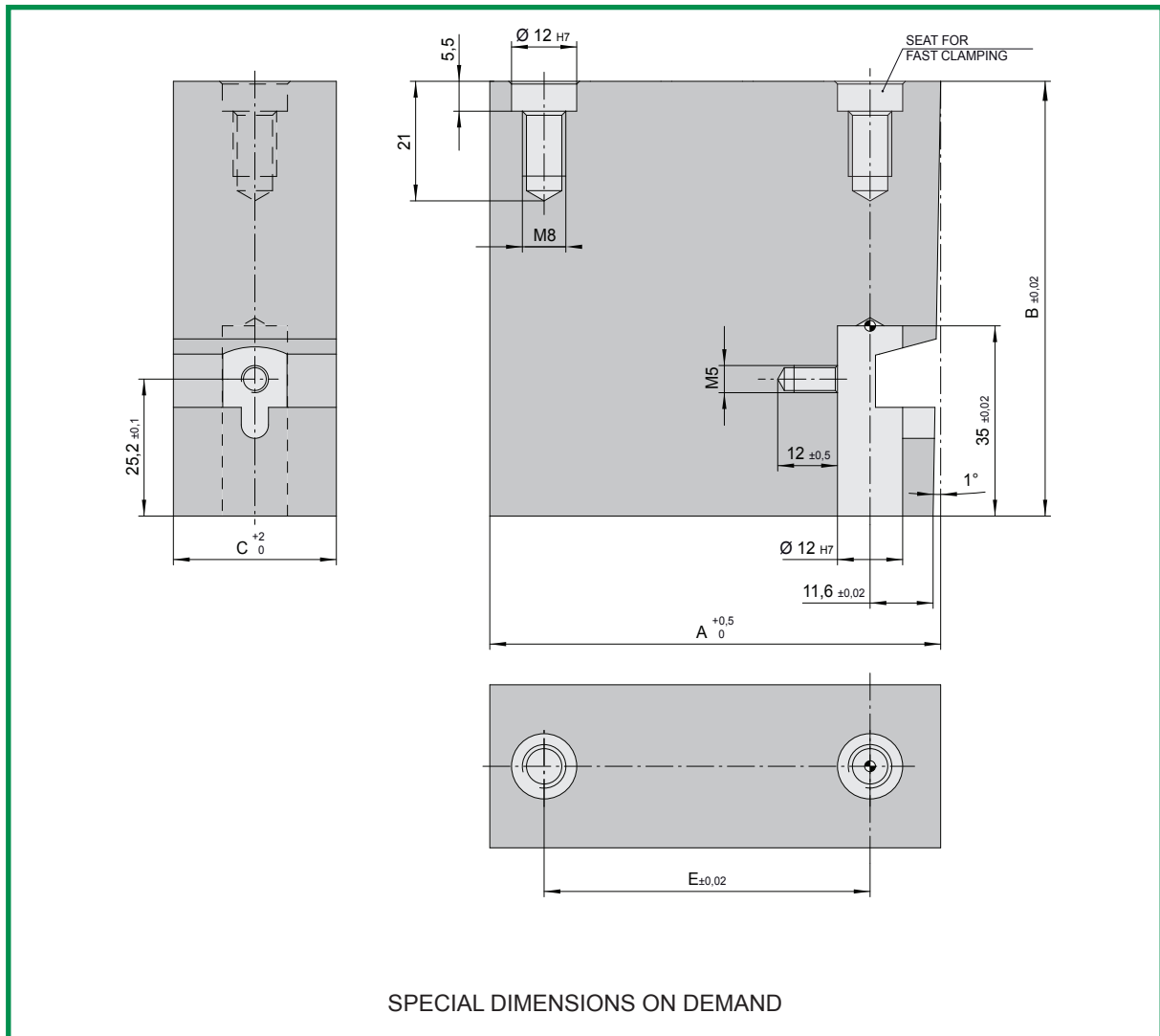
Hardness: 61-64 HRC Depth 1,5-2mm

CODE	A	B	L
SLSR2012300	12	6	300
SLSR2012500	12	6	500
SLSR2016300	16	6	300
SLSR2016500	16	6	500
SLSR2020300	20	8	300
SLSR2020500	20	8	500
SLSR2025400	25	8	400
SLSR2025600	25	8	600

Mat.: 1.2343

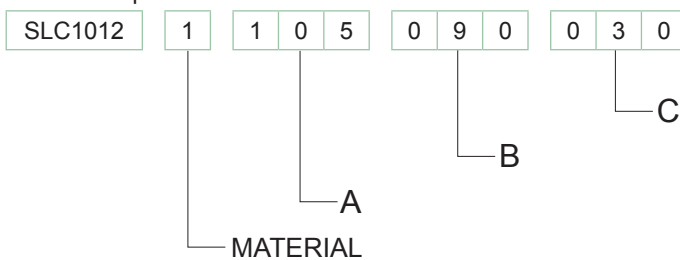
Hardness: Surface > 950 Vickers - HV 0,3

BODY SET 12 STANDARD LIFTER

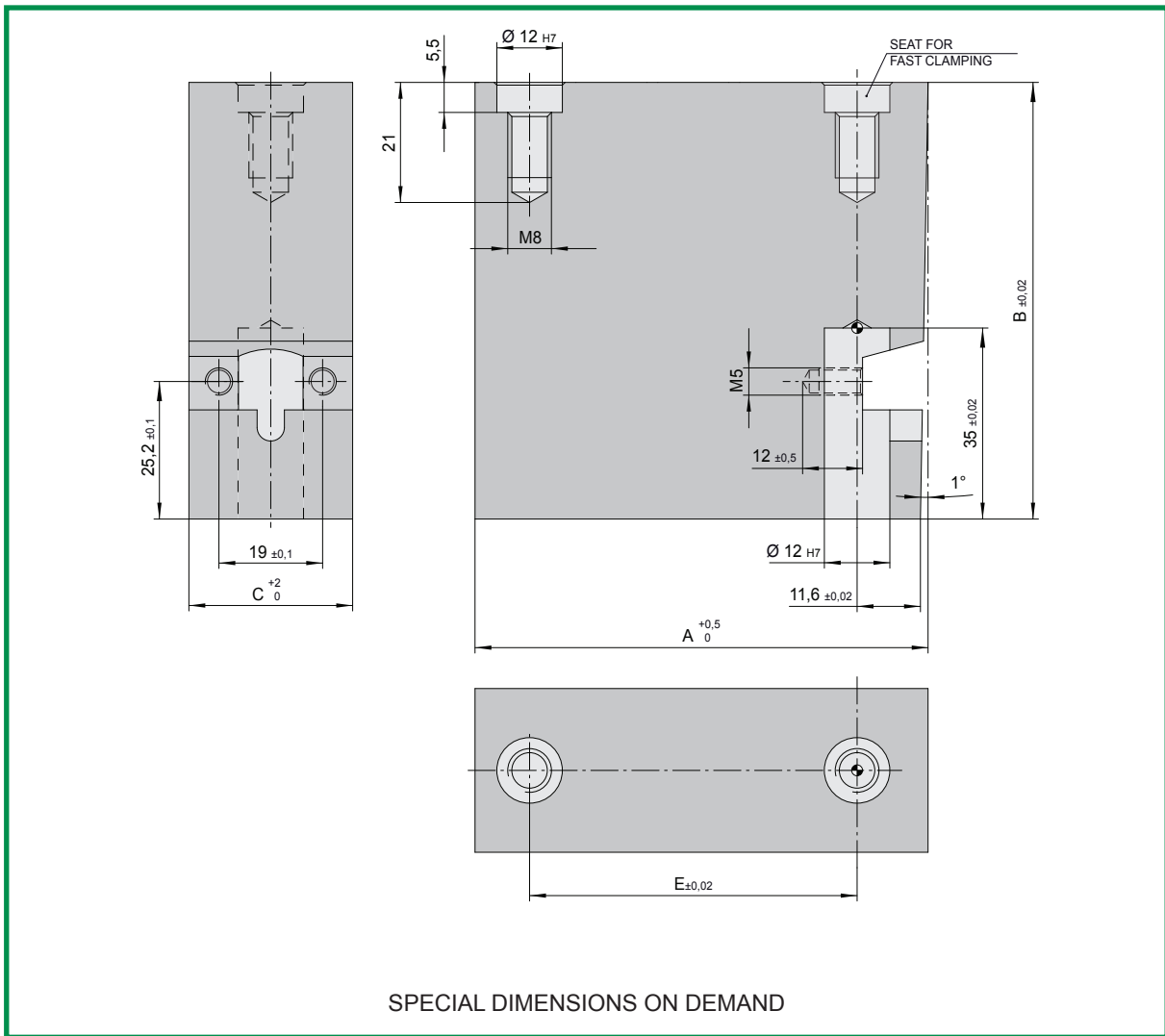


CODE	Material	A	E	B	C
SLC1012	1 = 1.2738 2 = 1.2343 (48+50 HRC)	70	40	70	20
		90	60	90	30
		105	80	105	40
		120		120	

Order example:

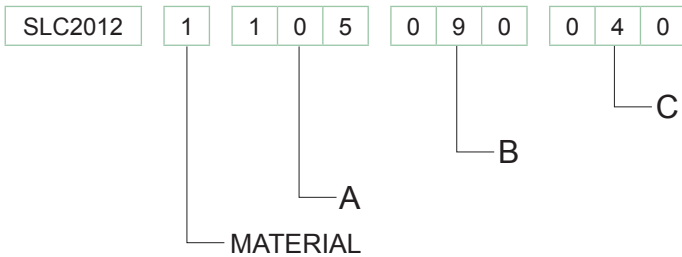


BODY SET 12 STANDARD LIFTER

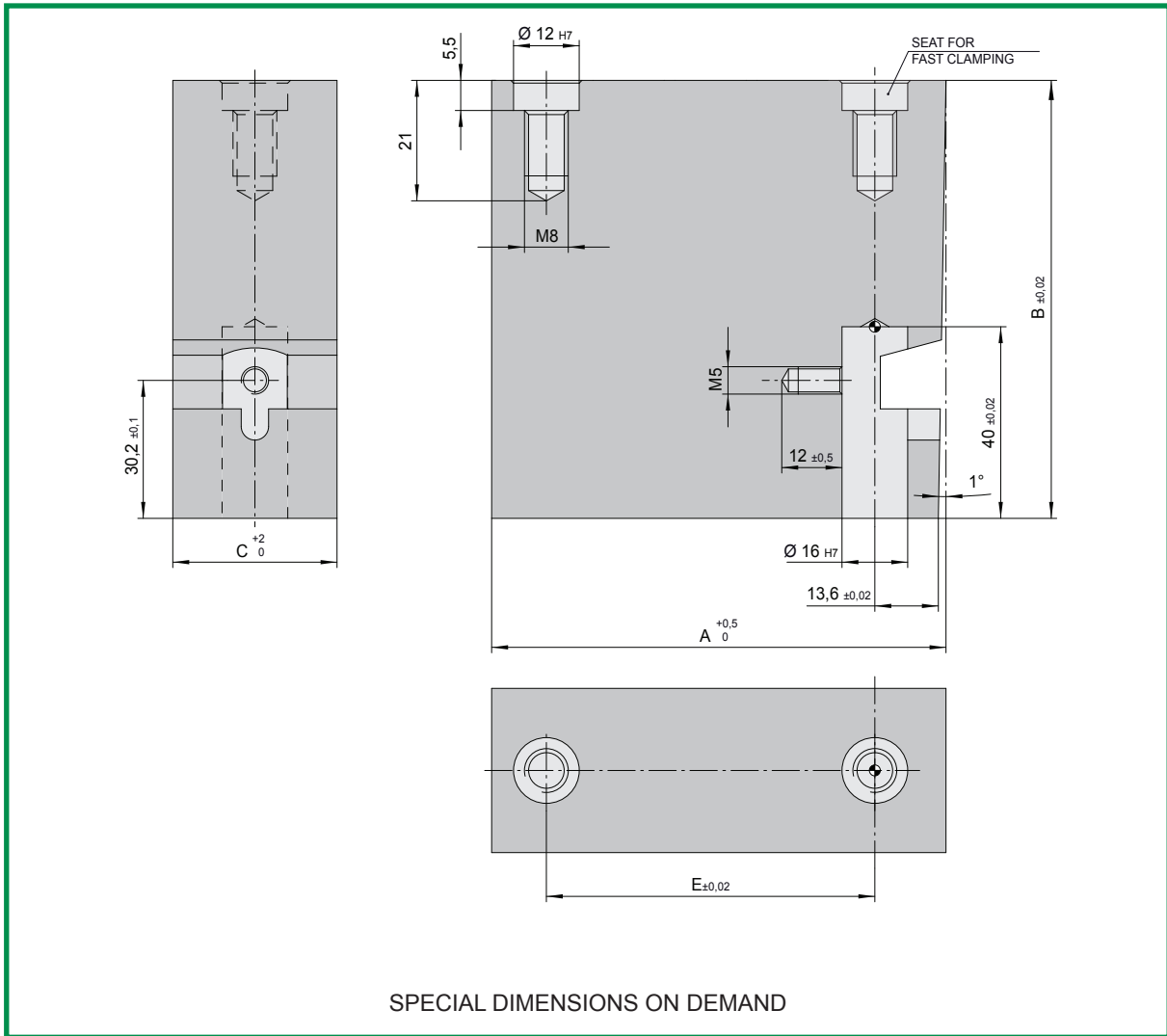


CODE	Material	A	E	B	C
SLC2012	1 = 1.2738 2 = 1.2343 (48-50 HRC)	70	40	70	40
		90	60	90	
		105	80	105	
		120		120	

Order example:

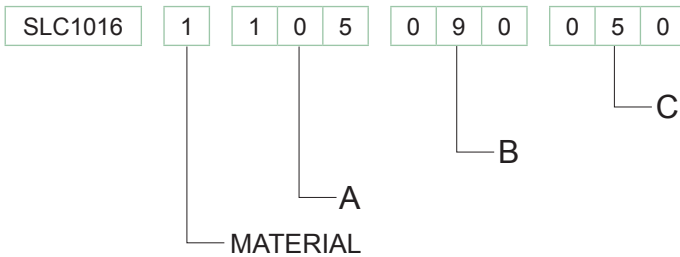


BODY SET 16 STANDARD LIFTER

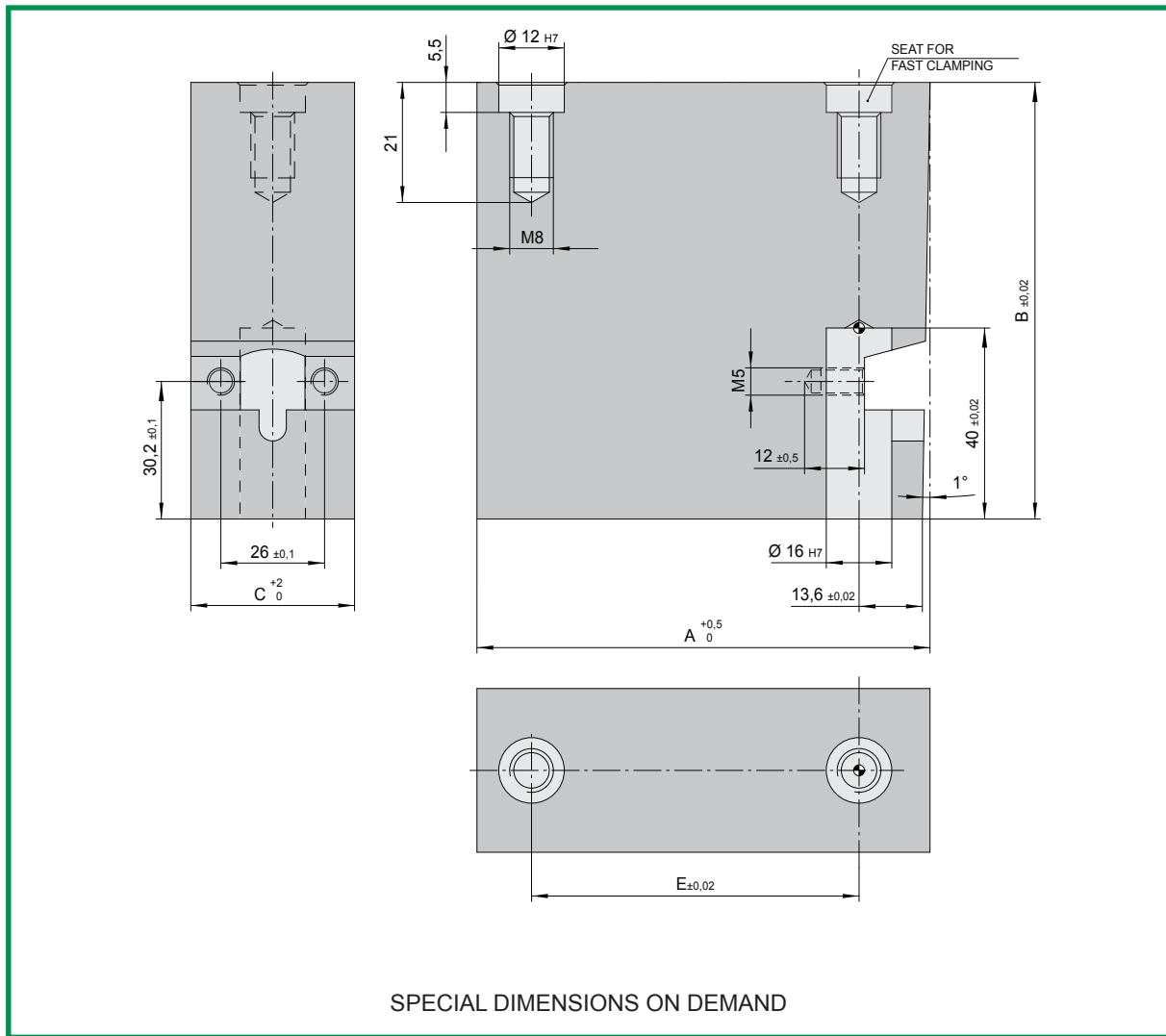


CODE	Material	A	E	B	C
SLC1016	1 = 1.2738 2 = 1.2343 (48-50 HRC)	70	40	70	30
		90	60	90	40
		105	80	105	50
		120		120	60

Order example:

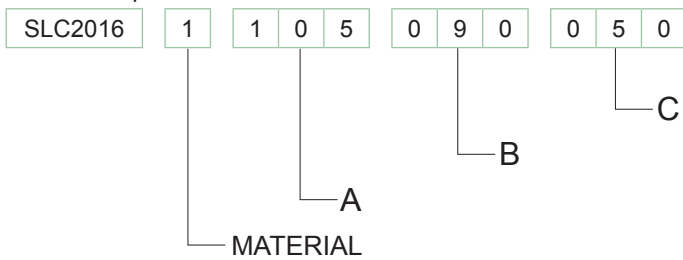


BODY SET 16 STANDARD LIFTER

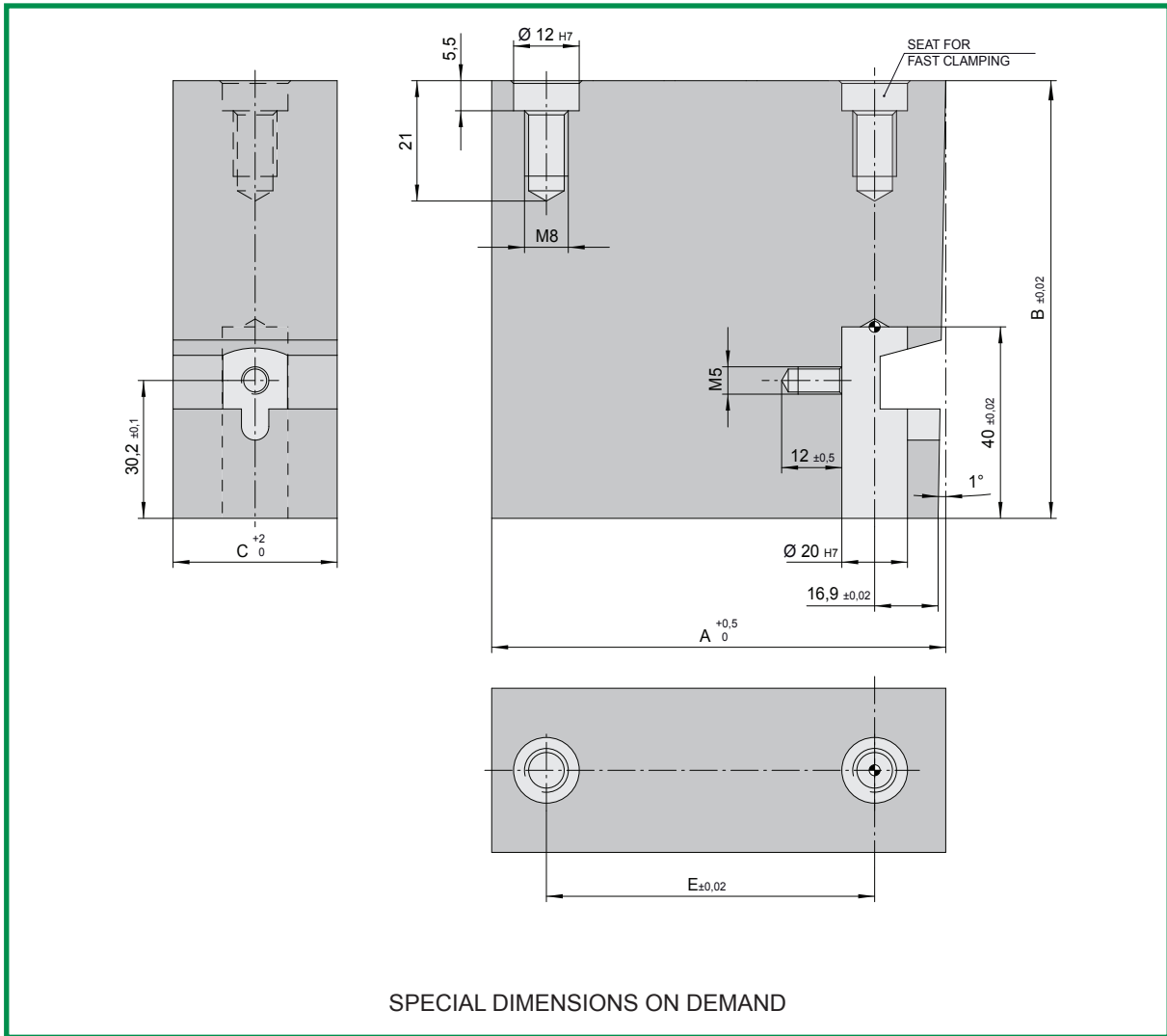


CODE	Material	A	E	B	C
SLC2016	1 = 1.2738 2 = 1.2343 (48-50 HRC)	70	40	70	40
		90	60	90	50
		105	80	105	60
		120		120	

Order example:

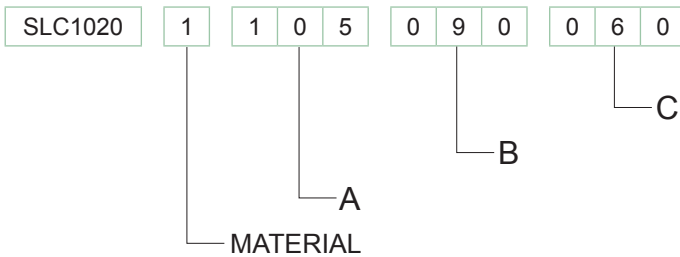


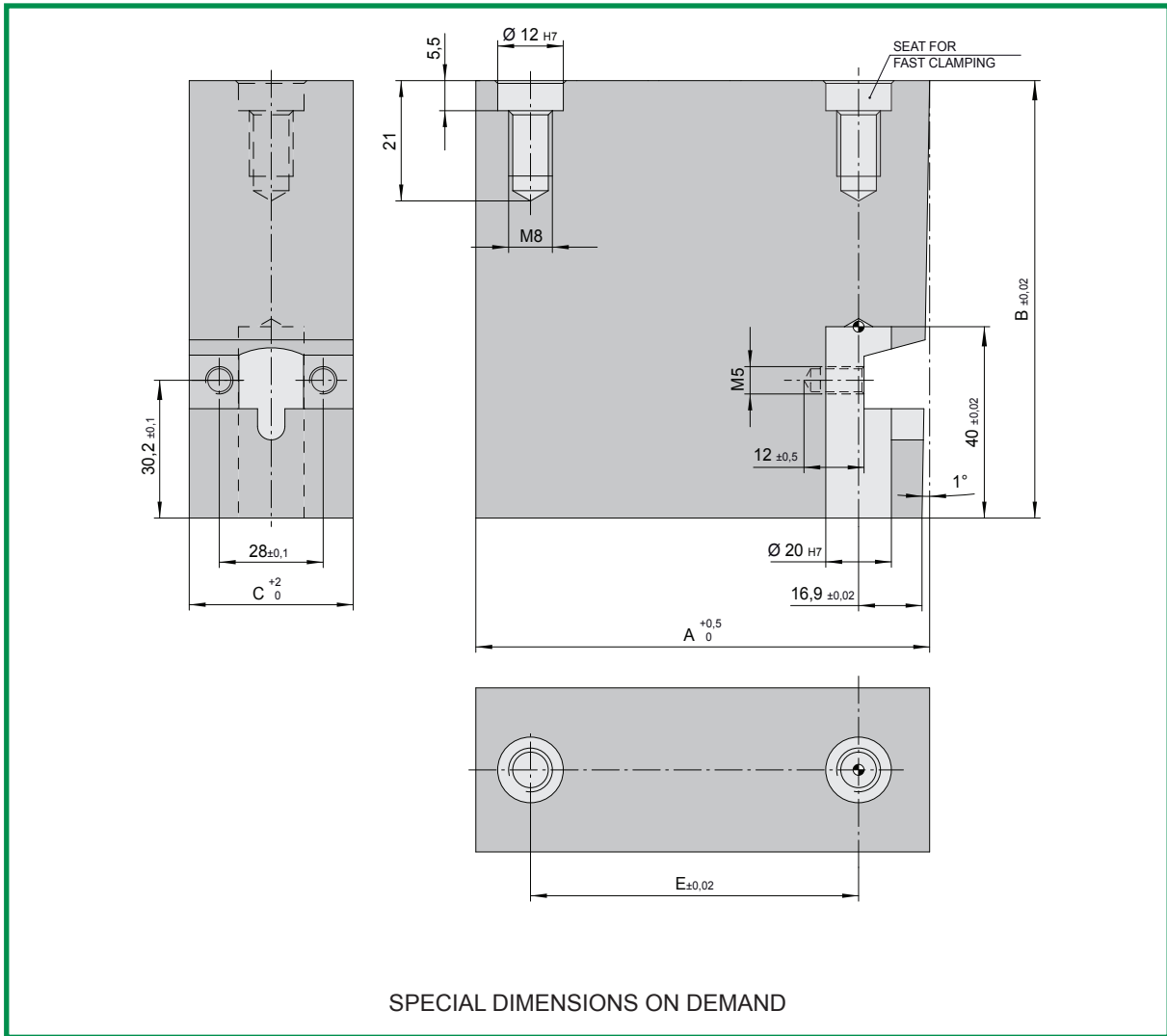
BODY SET 20 STANDARD LIFTER



CODE	Material	A	E	B	C
SLC1020	1 = 1.2738 2 = 1.2343 (48-50 HRC)	70	40	70	40
		90	60	90	50
		105		105	60
		120	80	120	70
				120	80

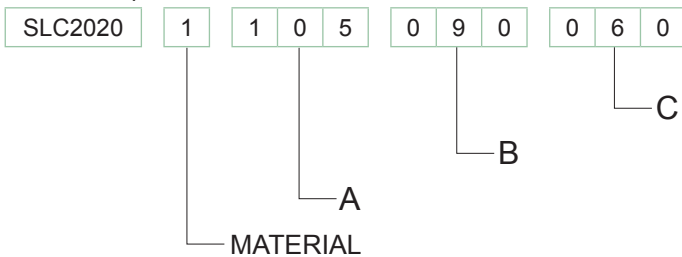
Order example:



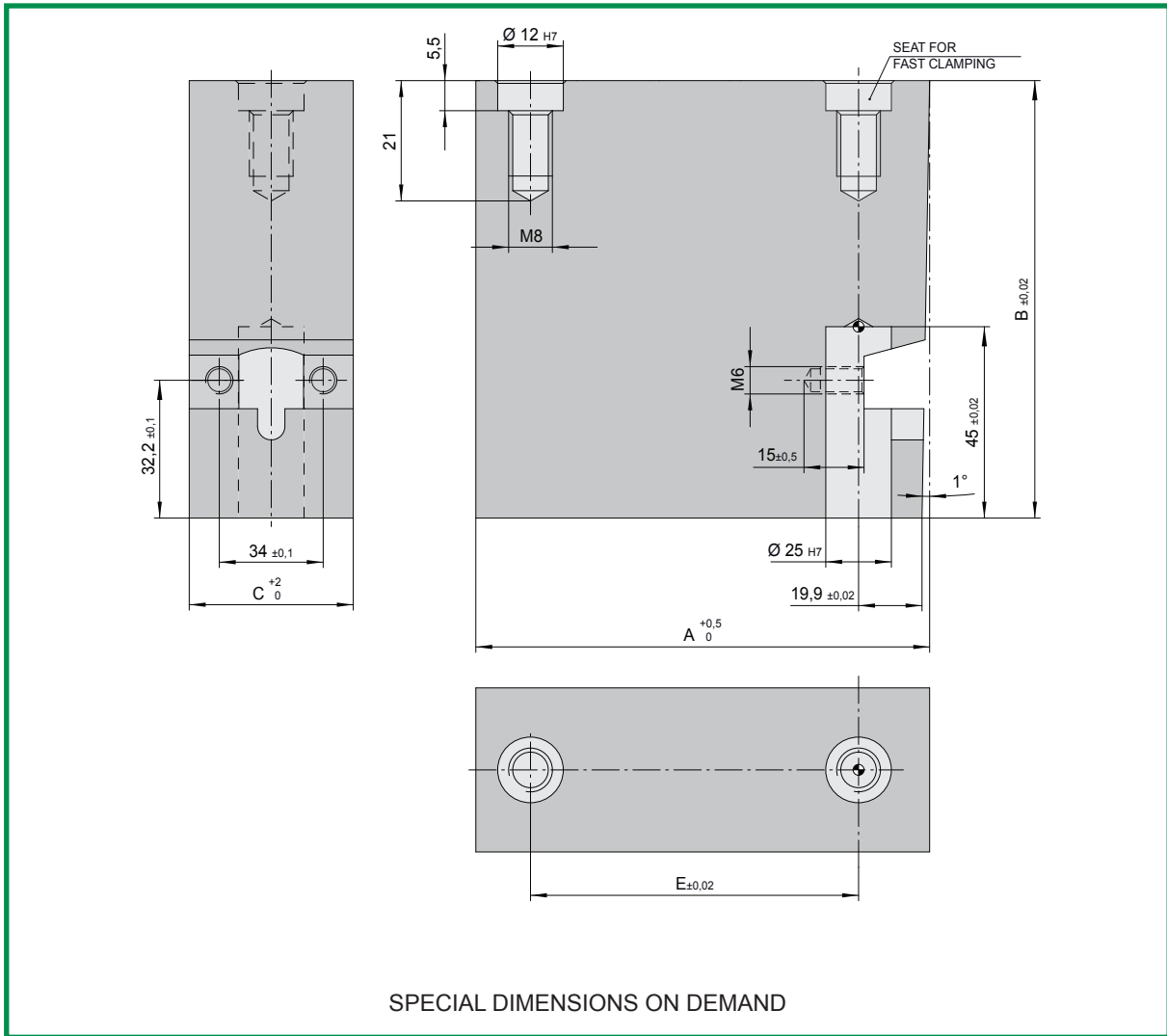


CODE	Material	A	E	B	C
SLC2020	1 = 1.2738 2 = 1.2343 (48-50 HRC)	70	40	70	40
		90	60	90	50
		105		105	60
		120	80	120	70
					80

Order example:

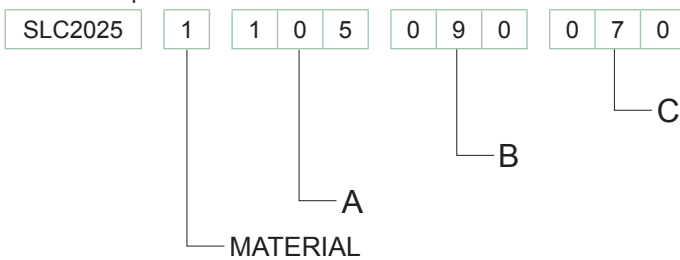


BODY SET 25 STANDARD LIFTER

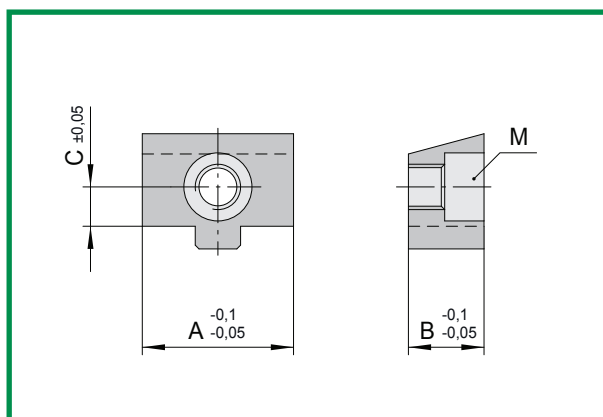


CODE	Material	A	E	B	C	
SLC2025	1 = 1.2738 2 = 1.2343 (48-50 HRC)	70	40	70	50	
		90	60		60	
		105	60		90	
		120	80	105	105	80
				120	120	90
						100
				110		
				120		

Order example:

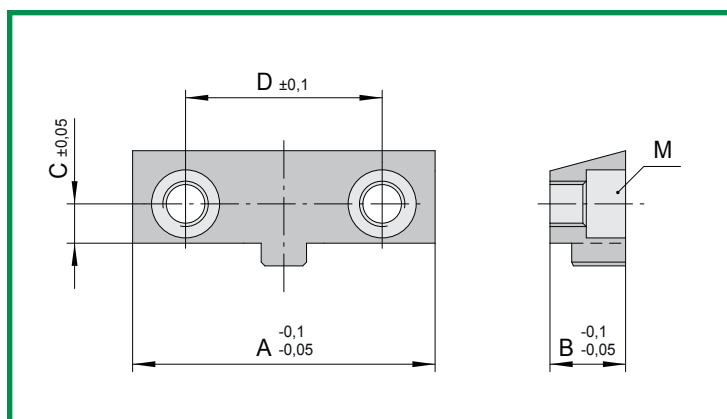


KEY STANDARD LIFTER



CODE	A	B	C	M
SLK1012102	15	10	5,2	M5x20
SLK1016508	20	10	5,2	M5x22
SLK1020304	25	10	5,2	M5x28
SLK1025001	30	12	7,2	M6x35

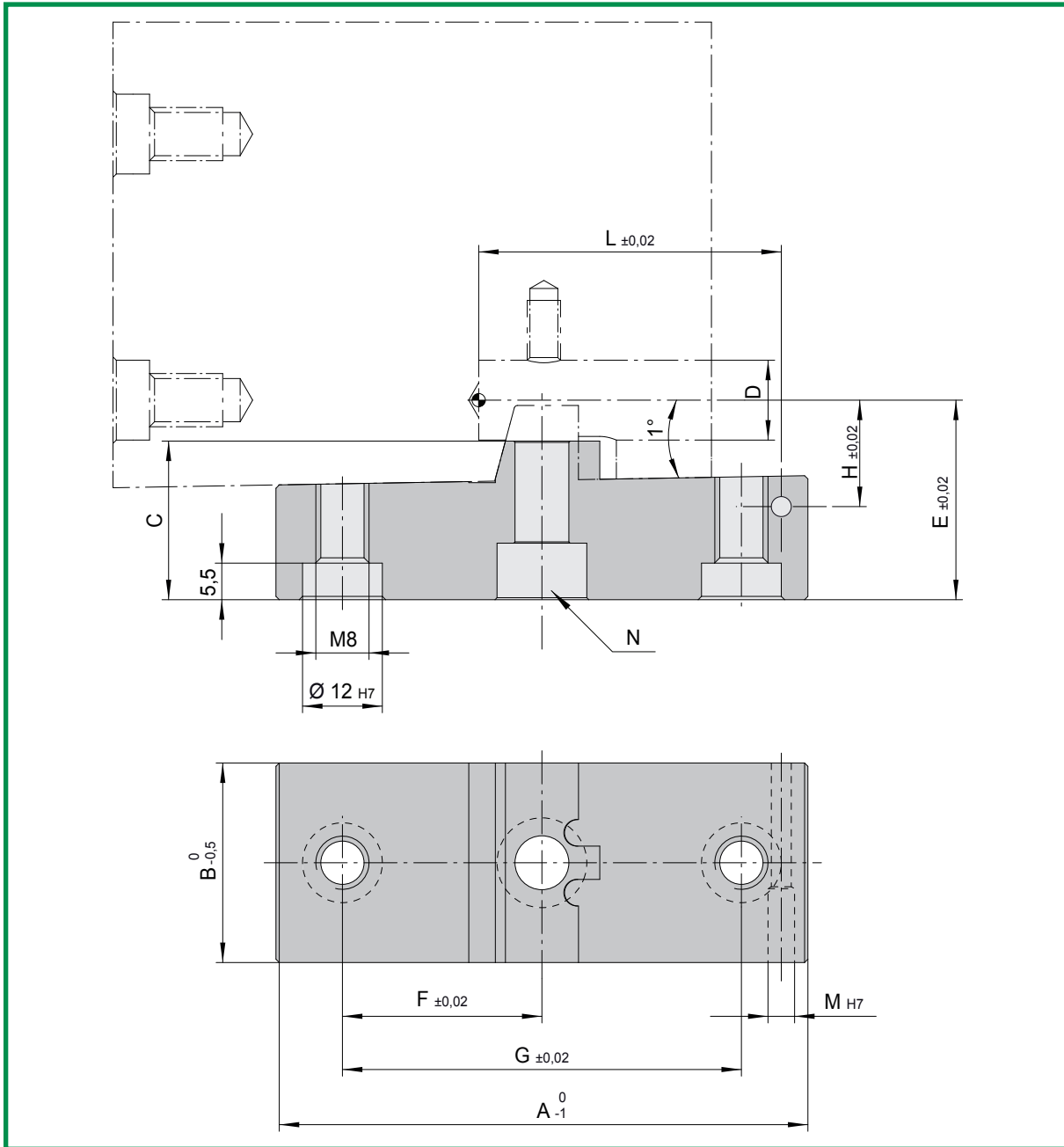
Mat.: 1.2343
Hardness: 44-46 HRC



CODE	A	B	C	D	M	SLSR COMPATIBLE
SLK2012102	30	10	5,2	19	M5x12	
SLK2012102R	30	10	5,2	19	M5x12	✓
SLK2016508	40	10	5,2	26	M5x12	
SLK2016508R	40	10	5,2	26	M5x12	✓
SLK2020304	40	10	5,2	28	M5x12	✓
SLK2025001	50	12	7,2	34	M6x16	✓

Mat.: 1.2343
Hardness: 44-46 HRC

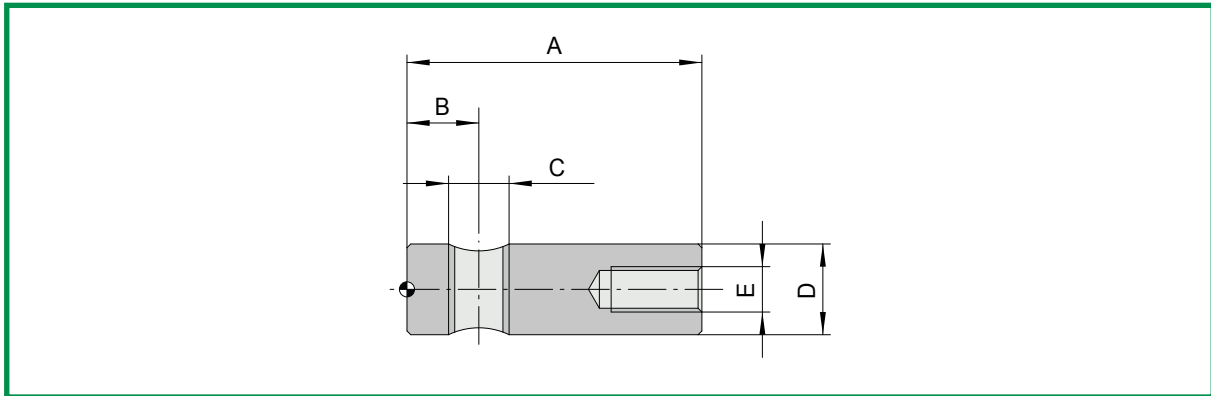
SPACER STANDARD LIFTER



CODE	A	B	C	D	E	F	G	H	L	M	N
SLD012102	85	30	28,8	12	35	30	60	20	47,5	6	M8x30
SLD016508	85	40	28,8	16	37	30	60	22	47,5	6	M8x35
SLD020304	85	40	28,8	20	39	30	60	24	47,5	6	M8x35
SLD025001	85	50	29,3	25	42	30	60	27	51	6	M10x40

Mat.: 1.1191

LOCKING PIN STANDARD LIFTER



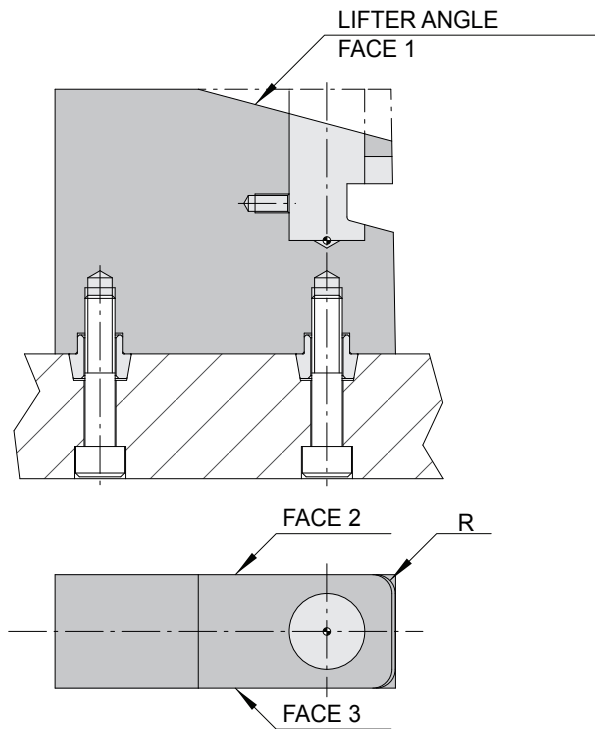
CODE	A	B	C	D	E
SLP012	34	9,5	M8	12	M6
SLP016	39	9,5	M8	16	M6
SLP020	39	9,5	M8	20	M6
SLP025	44	13	M10	25	M6

Mat.: 1.7225

MACHINING IN TWO STEPS

STEP 1

3 and 5 axis CNC milling machine: fixing with a vise or with fast clamping system and machining of all available faces.

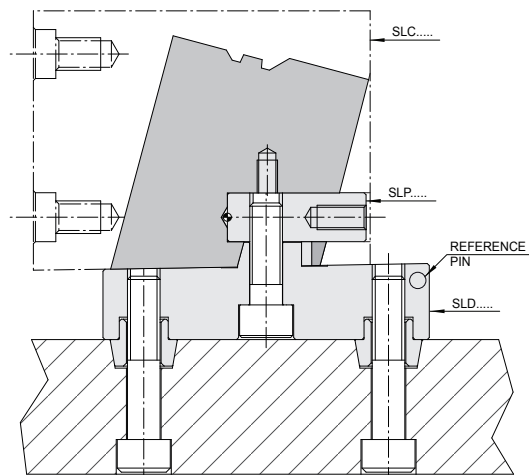


STEP 2

The machining of the remaining faces can be easily done with the use of the suitable spacer code SLD....

Once the body has been fixed to the spacer it is possible to proceed as follow:

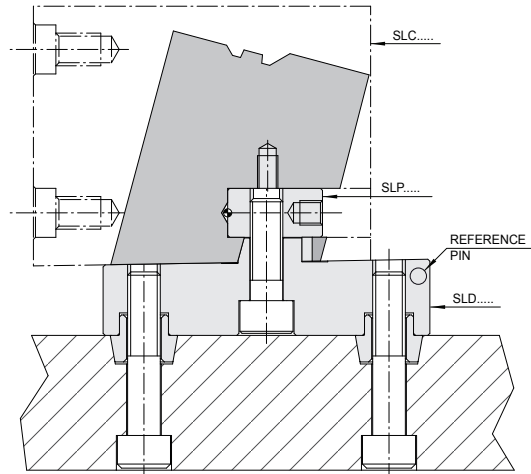
- 3 axis milling machine: clamping with a vise and workpiece's zero setting by the means of the reference pin;
- 5 axis milling machine: fixing with a vice or with fast clamping system allowing automatic workpiece's zero setting.



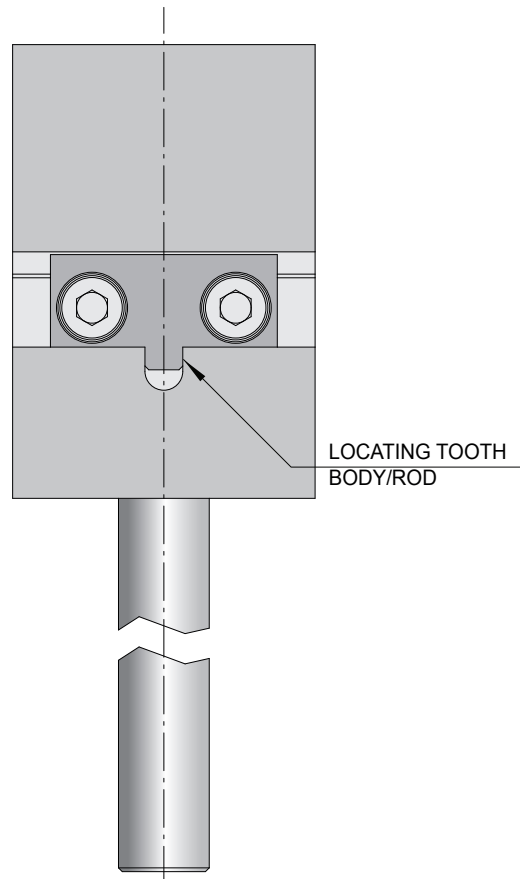
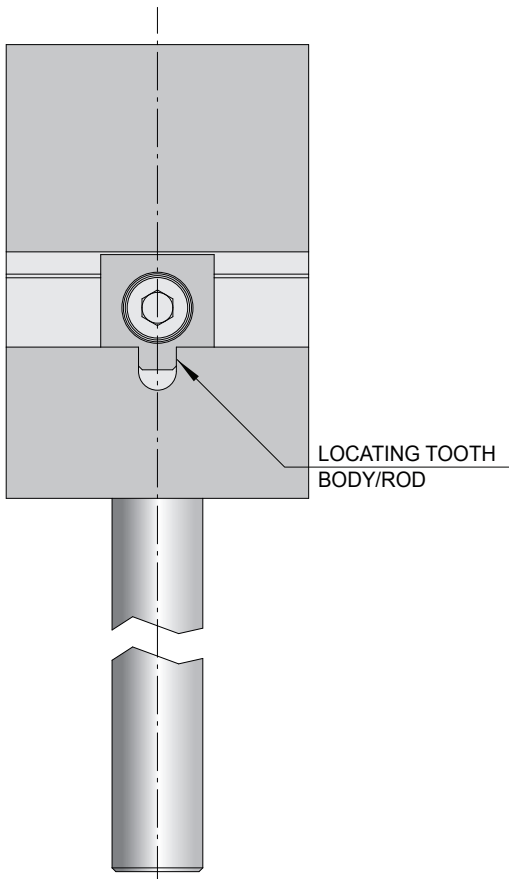
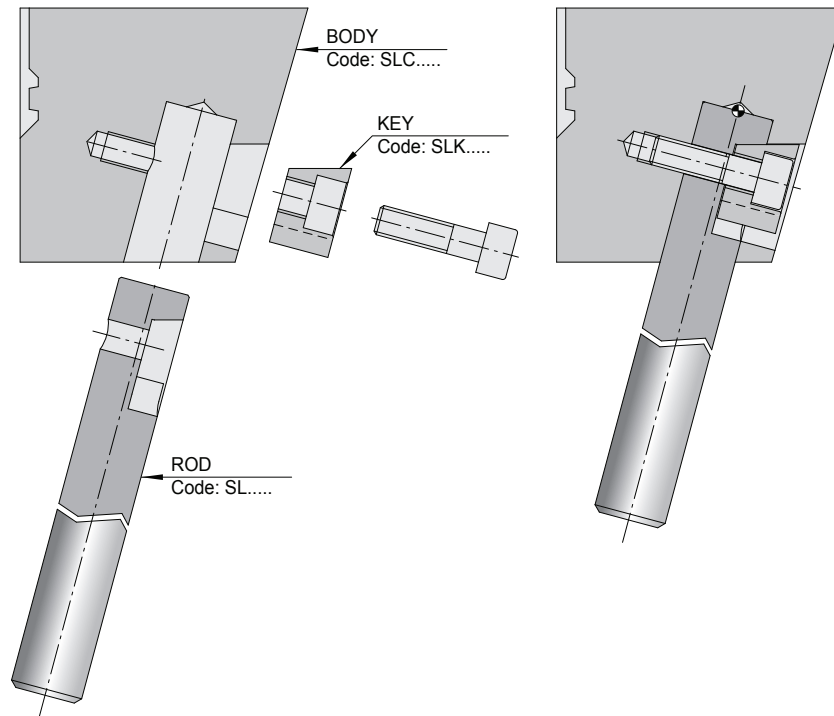
MACHINING IN ONE STEP

5 axis milling machines also allow to shape the lifter body in just one machining step:

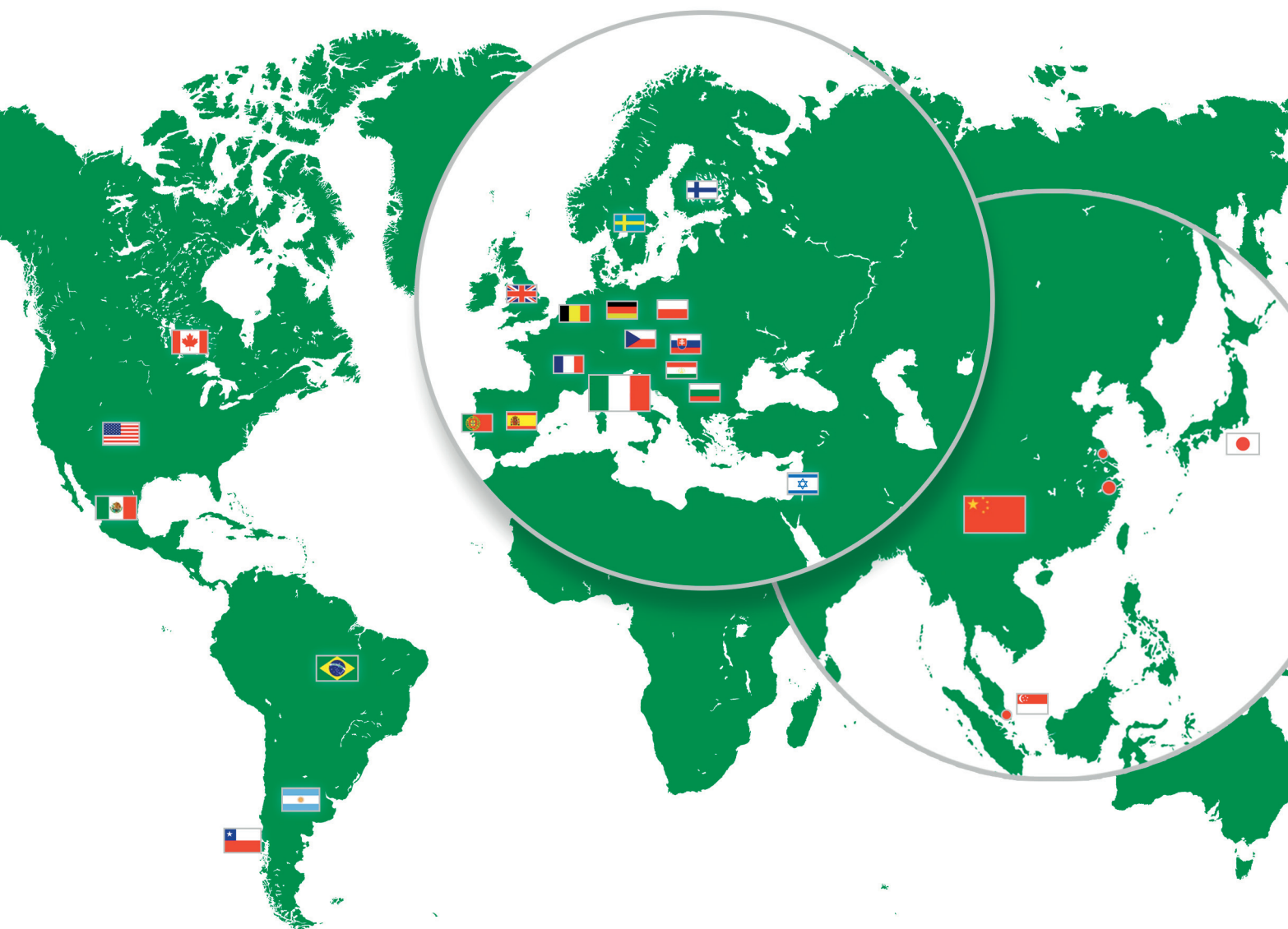
- assembly of Standard Lifter body SLC... with spacer SLD... using the locking pin SLP...;
- fixing with a vise or with fast clamping system and milling of the body.



The assembly of body and rod can be easily, precisely and safely done thanks to the design of the key and to the fixing screws.







ERMANN BALZI

Viale Enrico Mattei, 13

25080 Mazzano (Brescia)

Tel: +39 0302120868

E-mail: info@ermannobalzi.com