

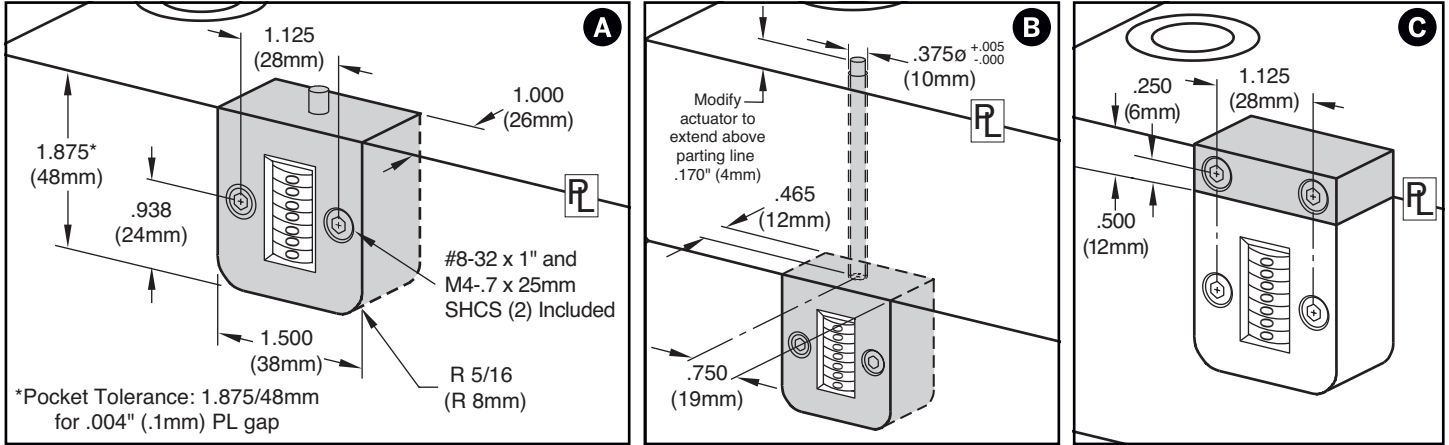
# COUNTERVIEW® S-SERIES



Progressive's CounterView positively monitors mold activity, validates process monitoring data, and assists mold maintenance procedures.

- Maximum operating temperatures:
  - 250° F (120° C) Standard CounterView
  - 375° F (190° C) High Temp CounterView
- Counter: Non-resettable mechanical, 7-digit
- Available for installation on the movable or stationary halves and with extensions.
- For heat protection, refer to the Insulators available on pages F-10 and F-11.

**M** Glass-filled Nylon housing



## MOUNTING OPTIONS

<b>Parting Line Mount</b>	<b>A</b>	Parting line mount makes unit easily visible to operator.
<b>Internal Extension Mount</b>	<b>B</b>	Machinable 8" (200mm) included extension rod allows installation in support plate or rail. Available with Standard CounterViews only.
<b>External Mount</b>	<b>C</b>	No pocket machining necessary. Designed specifically for retrofit applications. Order the Parting Line Mount and the CVE-EXT Block as shown below.

### Operator Side: Movable Half / B Side



CATALOG NUMBER	VERSION & MOUNTING STYLE
<b>CVPL-B</b>	Standard: Parting Line
<b>CVIN-B</b>	Standard: Internal Extension
<b>CVPLHT-B</b>	High Temp: Parting Line

Screws included.

### Operator Side: Stationary Half / A Side



CATALOG NUMBER	VERSION & MOUNTING STYLE
<b>CVPL-A</b>	Standard: Parting Line
<b>CVIN-A</b>	Standard: Internal Extension
<b>CVPLHT-A</b>	High Temp: Parting Line

Screws included.

Note: CounterViews can be ordered pre-set to a specific cycle count. Contact Customer Service for more information.

## ACCESSORIES



CATALOG NUMBER	DESCRIPTION
<b>CVE-EXT</b>	External Mounting Block including #8-32 x 1" (2) and M4 x 25mm screws (2)
<b>CVID</b>	ID Plate for CounterView