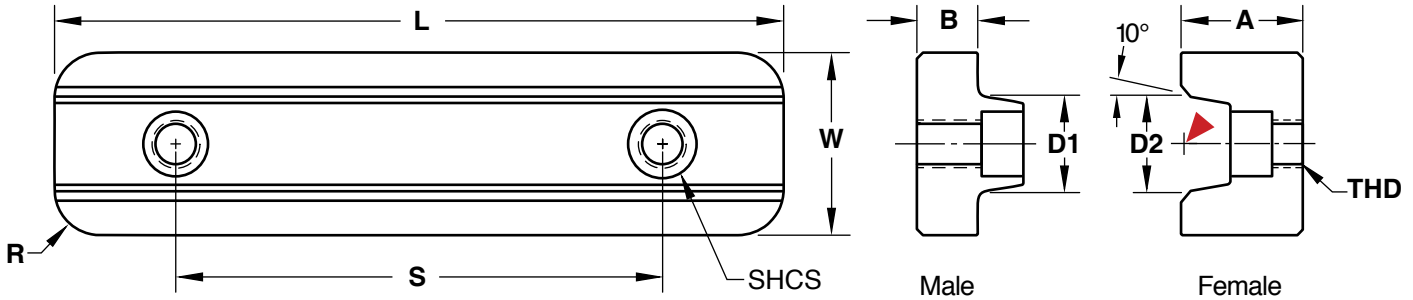


# RECTANGULAR TAPER BAR LOCKS



Female: **M** H-13 **H** Core: 42-48 HRC, Surface: 70 HRC **S** Black Nitride

Male: **M** D-2 **H** Core: 58-62 HRC, Surface: 80 HRC **S** Titanium Nitride Coated

CAD insertion point

MALE CATALOG NUMBER	FEMALE CATALOG NUMBER	L +.000 -.005	W +.0000 -.0004	A +.001 -.000	B +.001 -.000	D1 +.0005 -.0000	D2 +.0000 -.0005	R POCKET RADIUS	S ±.01	THD
MTBL100	FTBL100	1.99	.999	.690	.312	.5400	.5398	.250	Centered	1/4-20
MTBL125	FTBL125	3.99	1.249	.870	.375	.6700	.6698	.312	2.50	5/16-18
MTBL150	FTBL150	5.99	1.499	1.000	.500	.800	.7998	.375	4.00	3/8-16

MALE CATALOG NUMBER	SHCS	FEMALE CATALOG NUMBER	SHCS
MTBL100	#10-24 x 3/4 (1)	FTBL100	#10-24 x 1/2 (1)
MTBL125	1/4-20 x 7/8 (2)	FTBL125	1/4-20 x 5/8 (2)
MTBL150	5/16-18x 1 (2)	FTBL150	5/16-18 x 3/4 (2)

Screws included.

### APPLICATION GUIDELINES

- Lock pockets should be perpendicular to insert side walls to compensate for unequal thermal expansion.
- Mounting pockets must be accurately aligned on the A-side and B-side of the mold.
- Taper Bar Locks should be fit and pre-loaded to assure metal to metal contact on taper geometry.
- The back of the Locks can be ground to adjust for pre-load.

### ALTERNATIVE CONFIGURATIONS AVAILABLE

- To order Shuttle Mold sets or special male/female configurations, order the quantity of males or female inserts to suit.