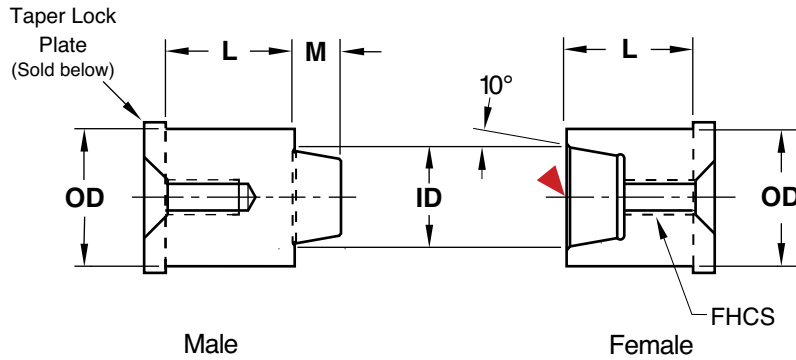




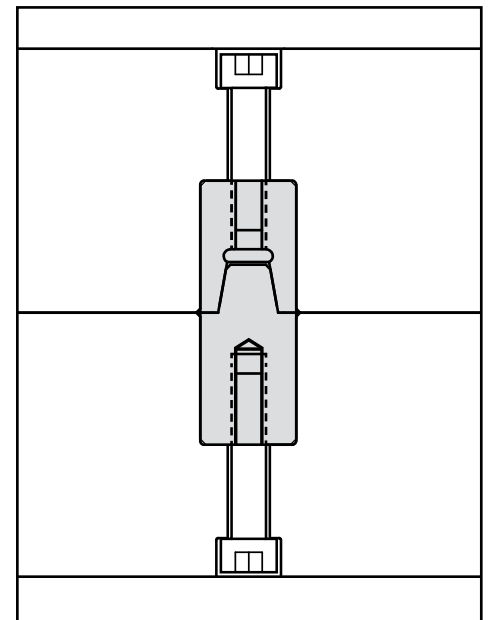
# TAPER LOCKS THREADED STYLE



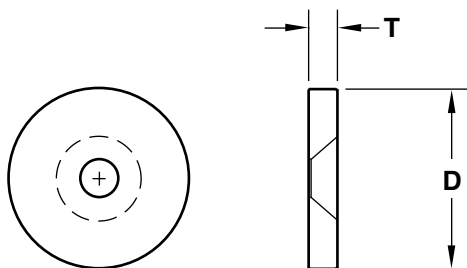
**M** H-13 **H** 48-52 HRC

▶ CAD insertion point

OD +.0000 -.0003	ID	M	THREAD SIZE	L +.004 +.008	MALE CATALOG NUMBER	FEMALE CATALOG NUMBER
<b>.5000</b>	.312	.250	#10-24	.687	MTL50L.68	FTL50L.68
				.875	MTL50L.87	FTL50L.87
				1.187	MTL50L1.18	FTL50L1.18
				1.375	MTL50L1.37	FTL50L1.37
<b>.7500</b>	.500	.281	1/4-20	.687	MTL75L.68	FTL75L.68
				.875	MTL75L.87	FTL75L.87
				1.187	MTL75L1.18	FTL75L1.18
				1.375	MTL75L1.37	FTL75L1.37
<b>1.000</b>	.625	.343	1/4-20	.687	MTL100L.68	FTL100L.68
				.875	MTL100L.87	FTL100L.87
				1.187	MTL100L1.18	FTL100L1.18
				1.375	MTL100L1.37	FTL100L1.37
<b>1.500</b>	1.000	.500	5/16-18	1.125	MTL150L1.12	FTL150L1.12
				1.375	MTL150L1.37	FTL150L1.37
				1.625	MTL150L1.62	FTL150L1.62
<b>2.000</b>	1.500	.500	5/16-18	1.125	MTL200L1.12	FTL200L1.12
				1.375	MTL200L1.37	FTL200L1.37
				1.625	MTL200L1.62	FTL200L1.62



# TAPER LOCK PLATES



**M** AISI 52100 **H** 57-61 HRC **S** Black Oxide

CATALOG NUMBER	TAPER LOCK O.D.	D +.000 -.015	T +.000 -.002	FLAT HEAD COUNTERBORE
<b>TLP50</b>	1/2	.687	.187	#10-24
<b>TLP75</b>	3/4	1.000	.187	1/4-20
<b>TLP100</b>	1	1.187	.187	1/4-20
<b>TLP150</b>	1-1/2	1.687	.250	5/16-18
<b>TLP200</b>	2	2.187	.250	5/16-18

1/2" long FHCS included.